

Public Document Pack



**TRAFFORD
COUNCIL**

AGENDA PAPERS MARKED 'TO FOLLOW' FOR HEALTH AND WELLBEING BOARD

Date: Friday, 19 October 2018

Time: 9.30 a.m.

Place: The Waterside, Sale, M33 7ZF

A G E N D A	PART I	Pages
(a) 2019/20 COMMISSIONING INTENTIONS AND LCA UPDATE To receive a presentation from the Corporate Director of Commissioning.		1 - 4

JIM TAYLOR
Interim Chief Executive

Membership of the Committee

Councillors S. Johnston (Vice-Chair), K. Ahmed, M. Bailey, J. Baugh, Mrs. J.E. Brophy, D. Eaton, C. Daly, C. Davidson, J. Harding, H. Fairfield, Dr. M. Jarvis, J. Lamb, J. Lloyd (Chair), M. Noble, M. Roe, R. Spearing, W. Miller, E. Roaf, A. Worthington, P. Duggan, S. Radcliffe and Rooney.

Further Information

For help, advice and information about this meeting please contact:

Alexander Murray, Democratic and Scrutiny Officer,
Tel: 0161 912 4250
Email: alexander.murray@trafford.gov.uk

This agenda was issued on 11 October 2018 by the Legal and Democratic Services Section, Trafford Council, Trafford Town Hall; Talbot Road, Stretford, Manchester, M32 0TH.

Health and Wellbeing Board - Friday, 19 October 2018

Any person wishing to photograph, film or audio-record a public meeting is requested to inform Democratic Services in order that necessary arrangements can be made for the meeting.

Please contact the Democratic Services Officer 48 hours in advance of the meeting if you intend to do this or have any queries.

Defining the Local Care Alliance

Local – designed for Trafford and the needs and aspirations of our residents

Care – in its very broadest sense, health and social care, self care and prevention to complex care

Alliance – to truly integrate care and be accountable with our providers – working together

We will -

- Commissioning strategically for outcome focused care models and systems
- Commissioning by co-designing place based delivery models
- Creating alliances for better health and care – leading together and co-designing with our providers
- Provide high quality services that deliver the best outcomes for patients

We are –

Health commissioners - Trafford CCG

Social Care commissioners - Trafford Council

The acute trust - Manchester Foundation Trust

Community providers - Pennine Care NHS Foundation Trust

Greater Manchester **Mental Health**

Thrive, our voluntary sector partners, and

Primary Care – Trafford Primary Health, supported and advised by the Local Medical Committee

Our out of hours provider, **Mastercall**

We will deliver –

improve health and wellbeing for the people of Trafford maximising available resources through system wide collaboration

How our Local Care Alliance works

Memorandum of Understanding signed April 18 formally constituting the LCA. Terms of reference and governance agreed as -

- **System Board** (meets monthly): Set direction and objectives. Independently chaired, bringing together health and social care commissioners and providers, senior leaders who are responsible for strategic oversight and delivery within their own organisations
- **Provider Board:** (also monthly) Responsible for delivery. Brings together providers to deliver the system wide objectives, and the current winter work programme - 4 themes
- **Operational Working Groups** for each of the themes (weekly or bi-weekly) – operational delivery
- **Programme Management** – Health and Care PMO developing and monitoring the agreed programme of work

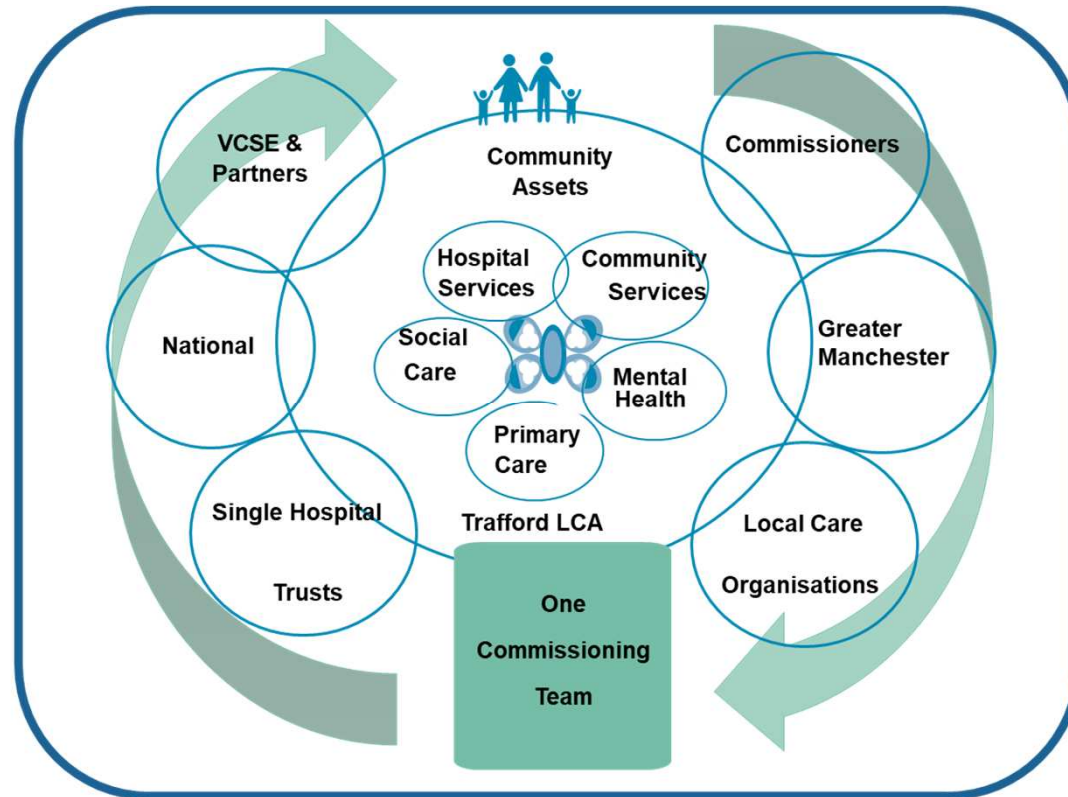
Local Care Organisations (LCO), Local Care Alliance (LCA) - Similar, but not the same. In an LCO, organisation form is vertically integrated, place based, integrated delivery at scale and pace.

Our alliance in 2018/19 is focussed on partners working together on system wide specific work programmes, rather than formally constituted organisation form

Where it fits in the system

Systems and organisations

People - patients, carers, practitioners



Public reform: enablers and infrastructure

Wider community assets

Page 3

Local Care Organisations (LCO), Local Care Alliance (LCA) - Similar, but not the same. In an LCO, organisation form is vertically integrated, place based, integrated delivery at scale and pace. Our alliance in 2018/19 focussed on partners working together on system wide specific work programmes.

This page is intentionally left blank